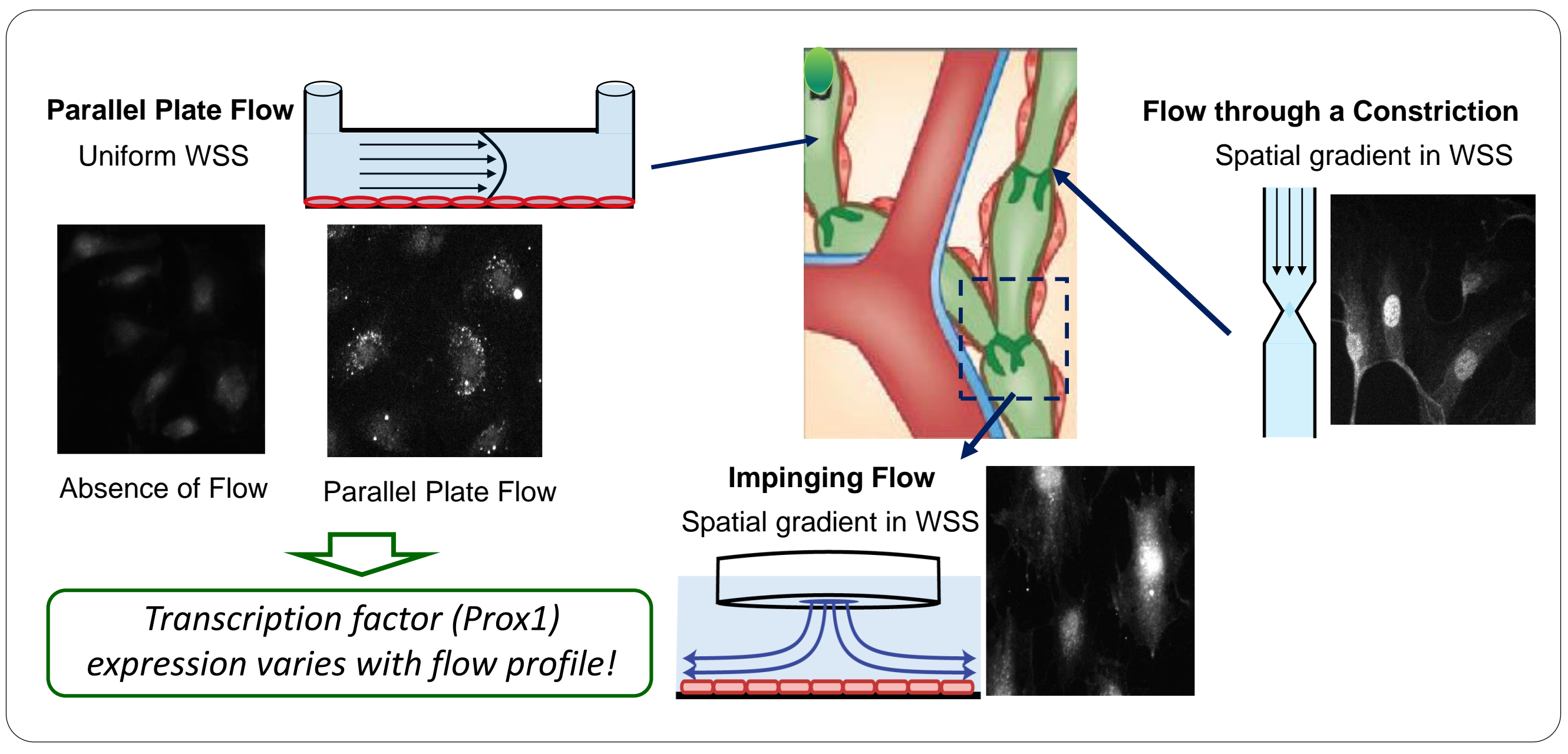




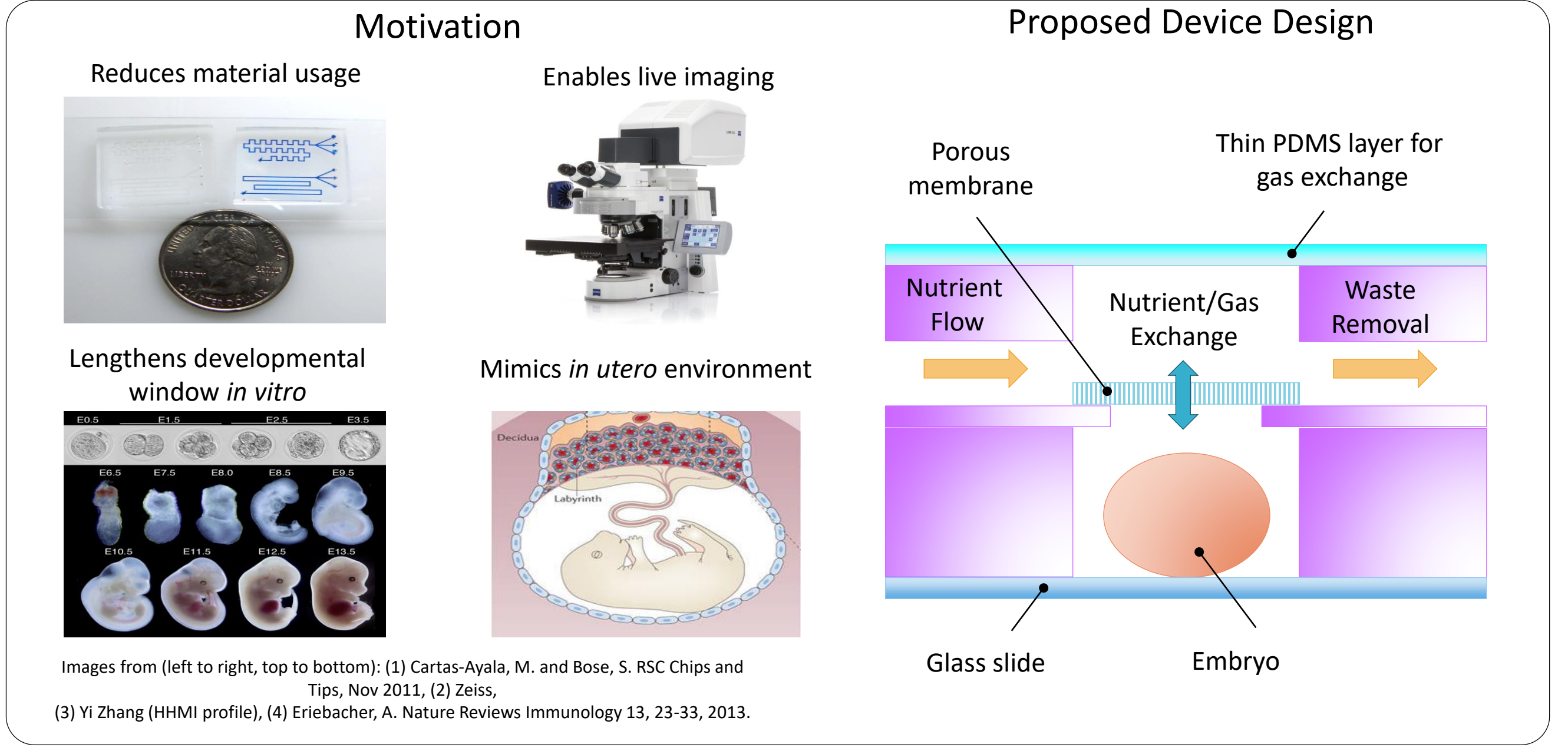
# Fuller Group

## BIOPHYSICS

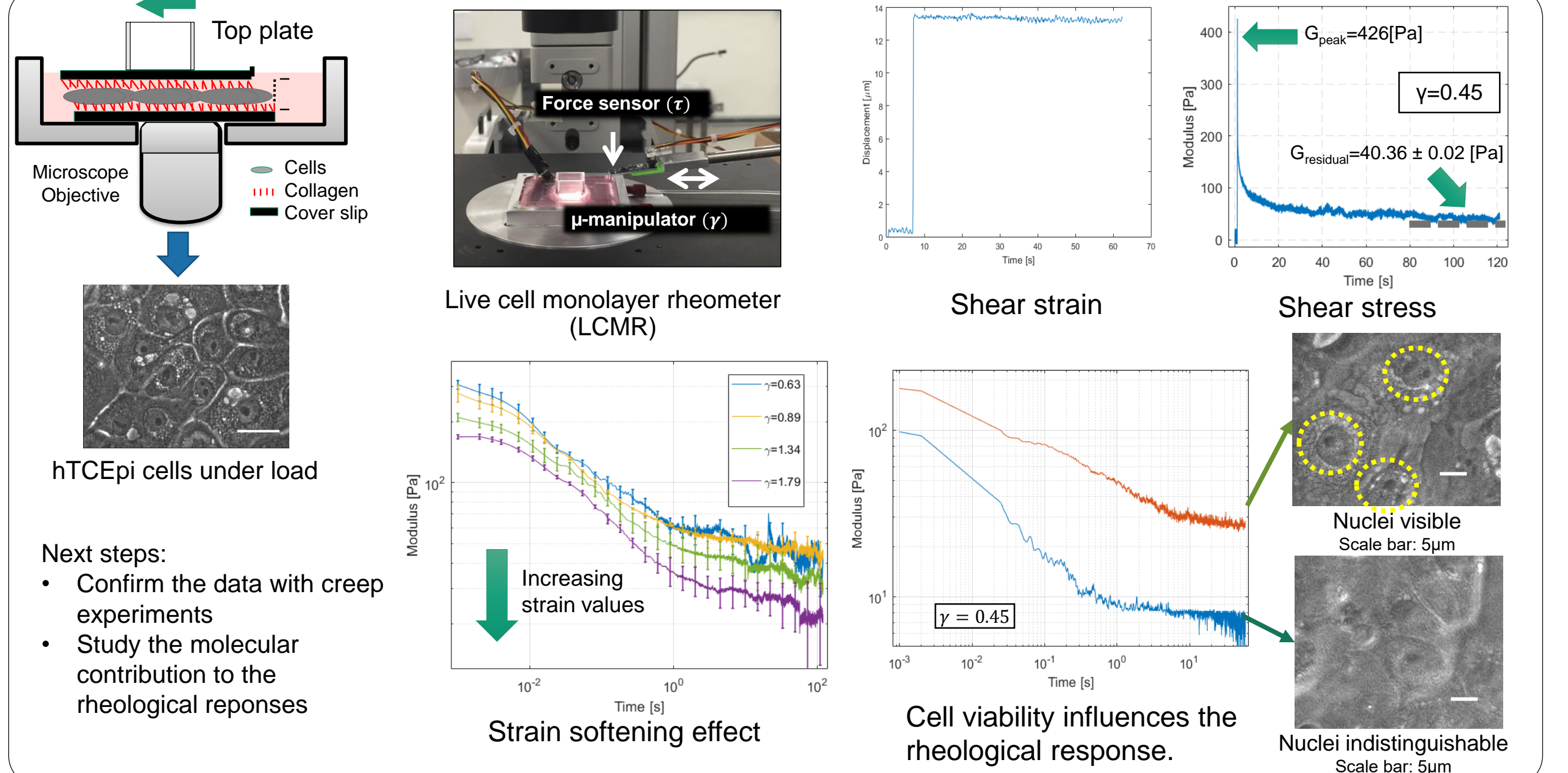
*In vitro* flow devices to study physiological flows in blood and lymphatic vessels  
Vinay Surya and Eleftheria Michalaki



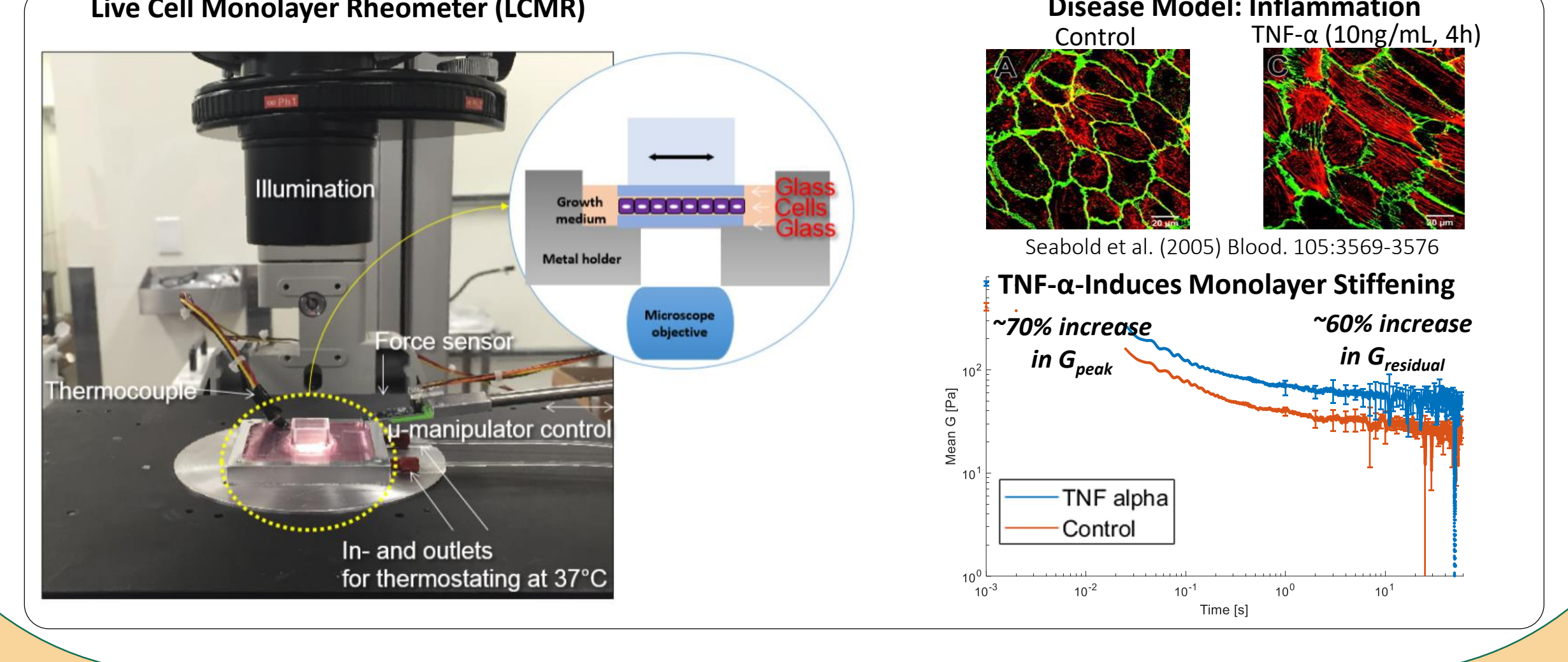
Microfluidic Perfusion Culture of Murine Embryos  
Kiara Cui



Rheology of cell monolayers  
Chunzi Liu, Juho Pokki

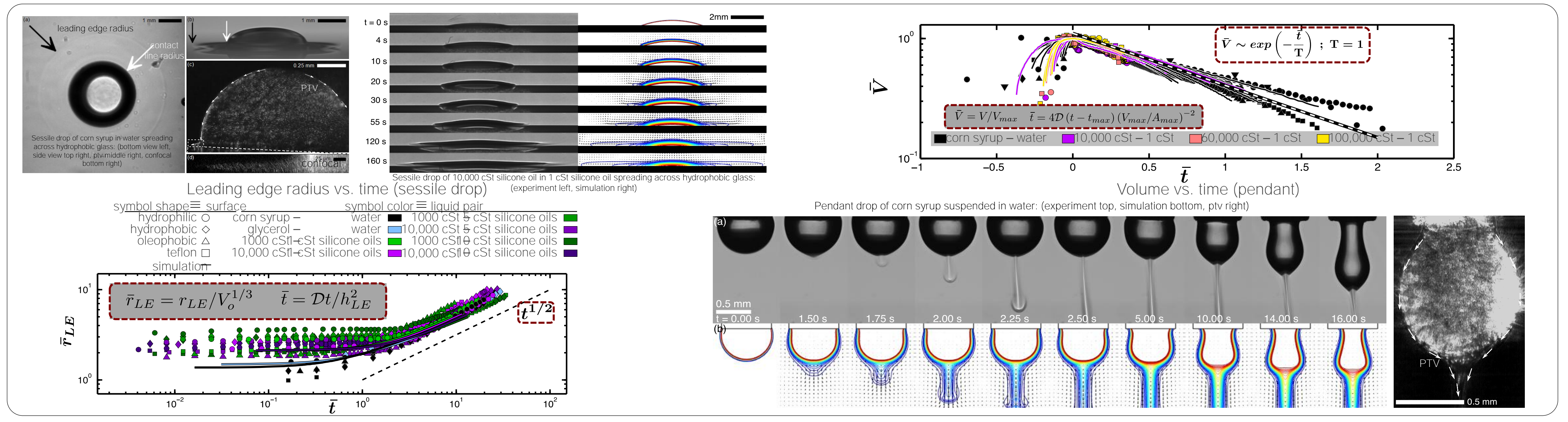


Characterizing the shear mechanics of the endothelium  
Ada Undieh

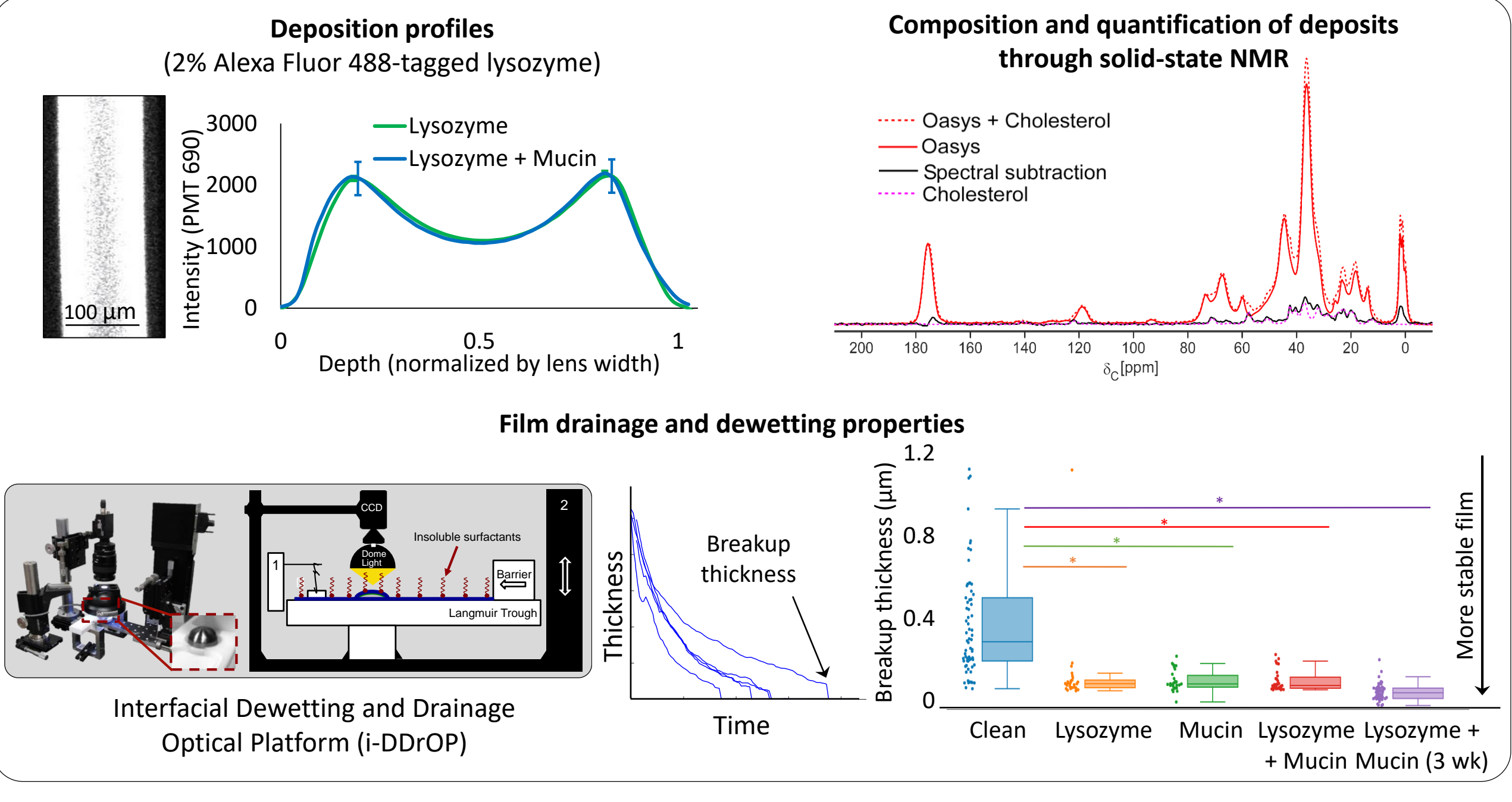


## INTERFACIAL PHENOMENON

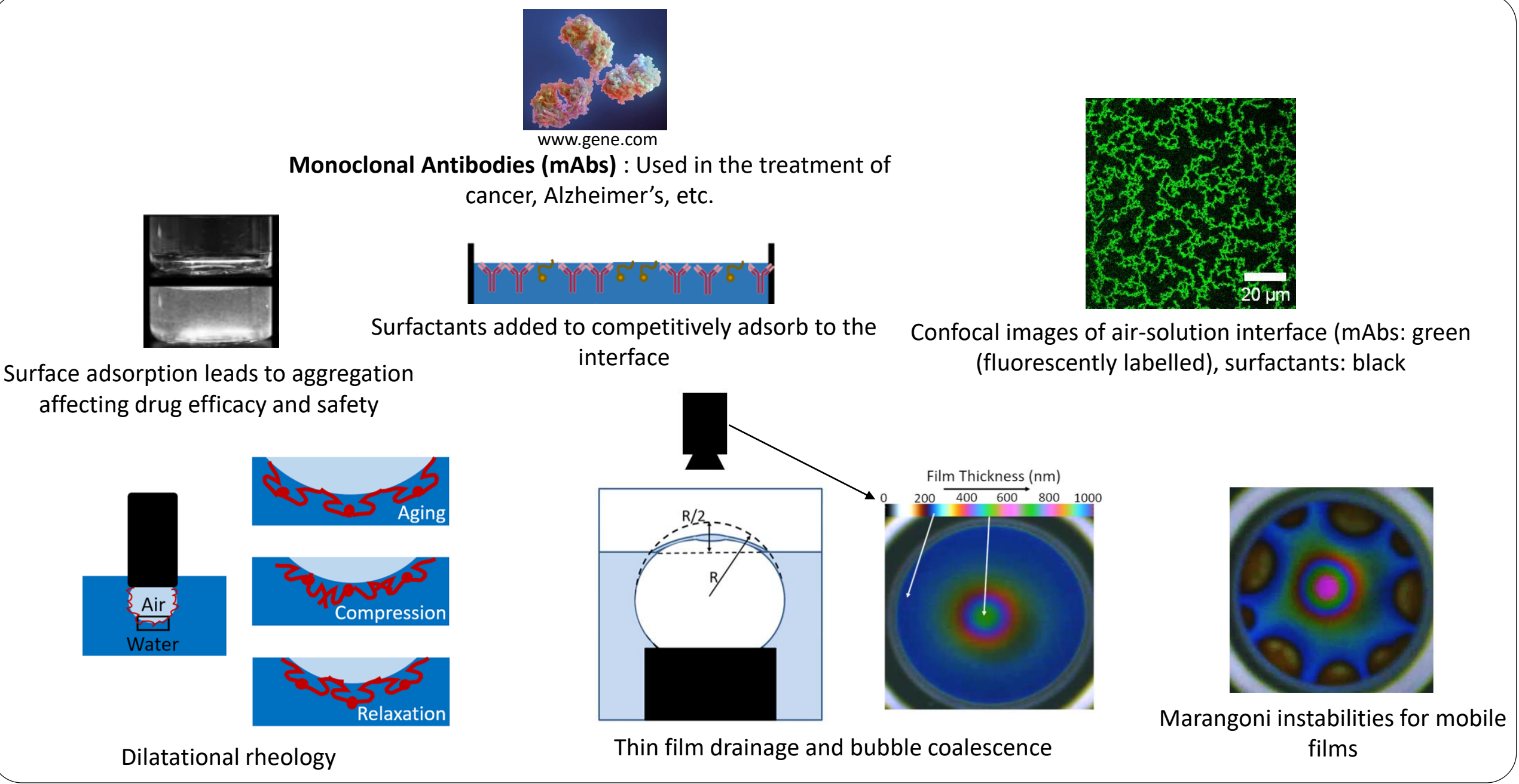
Spreading of miscible liquids  
Dan Walls



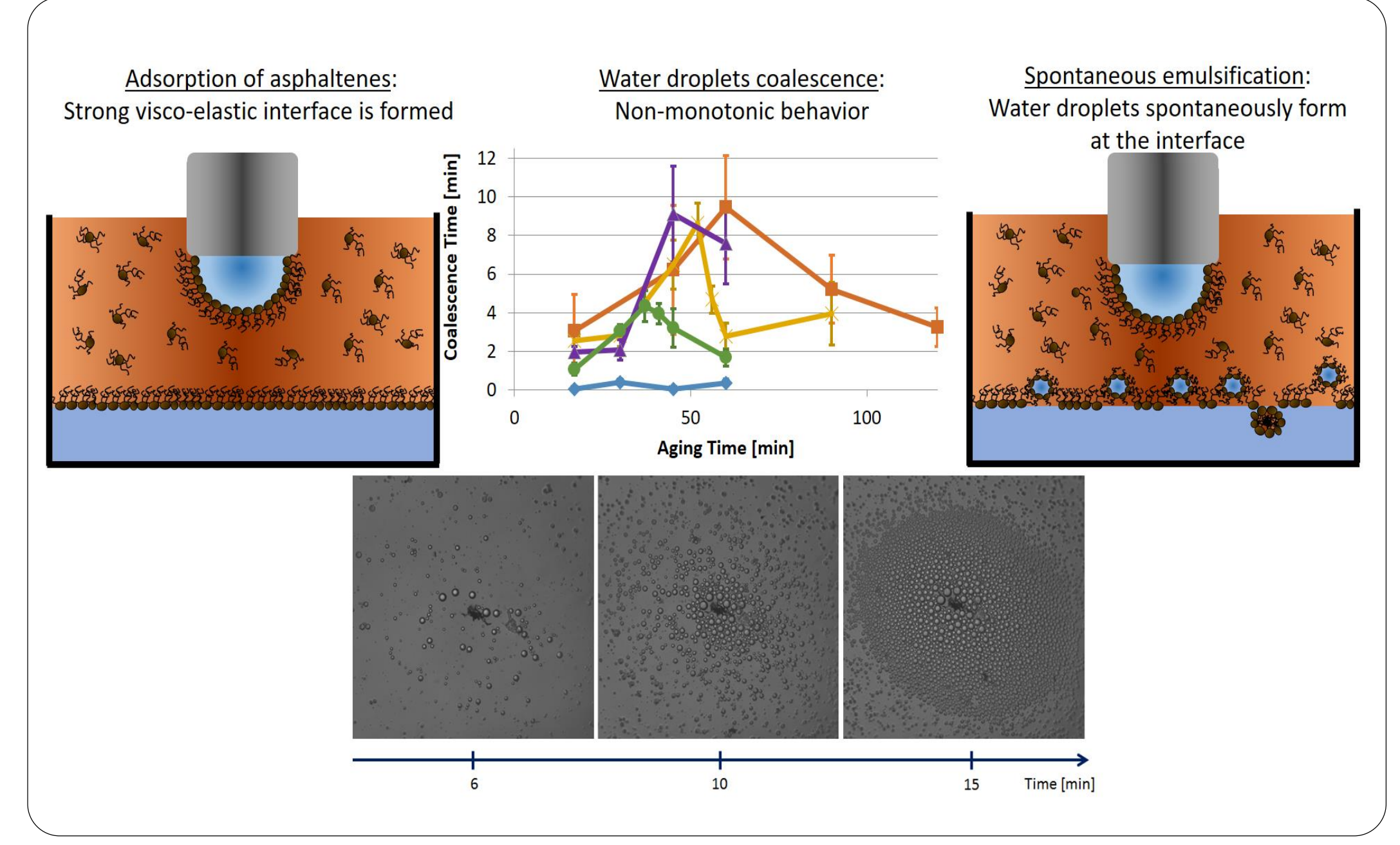
Examining tear film component deposition on contact lenses  
Noelle Rabiah



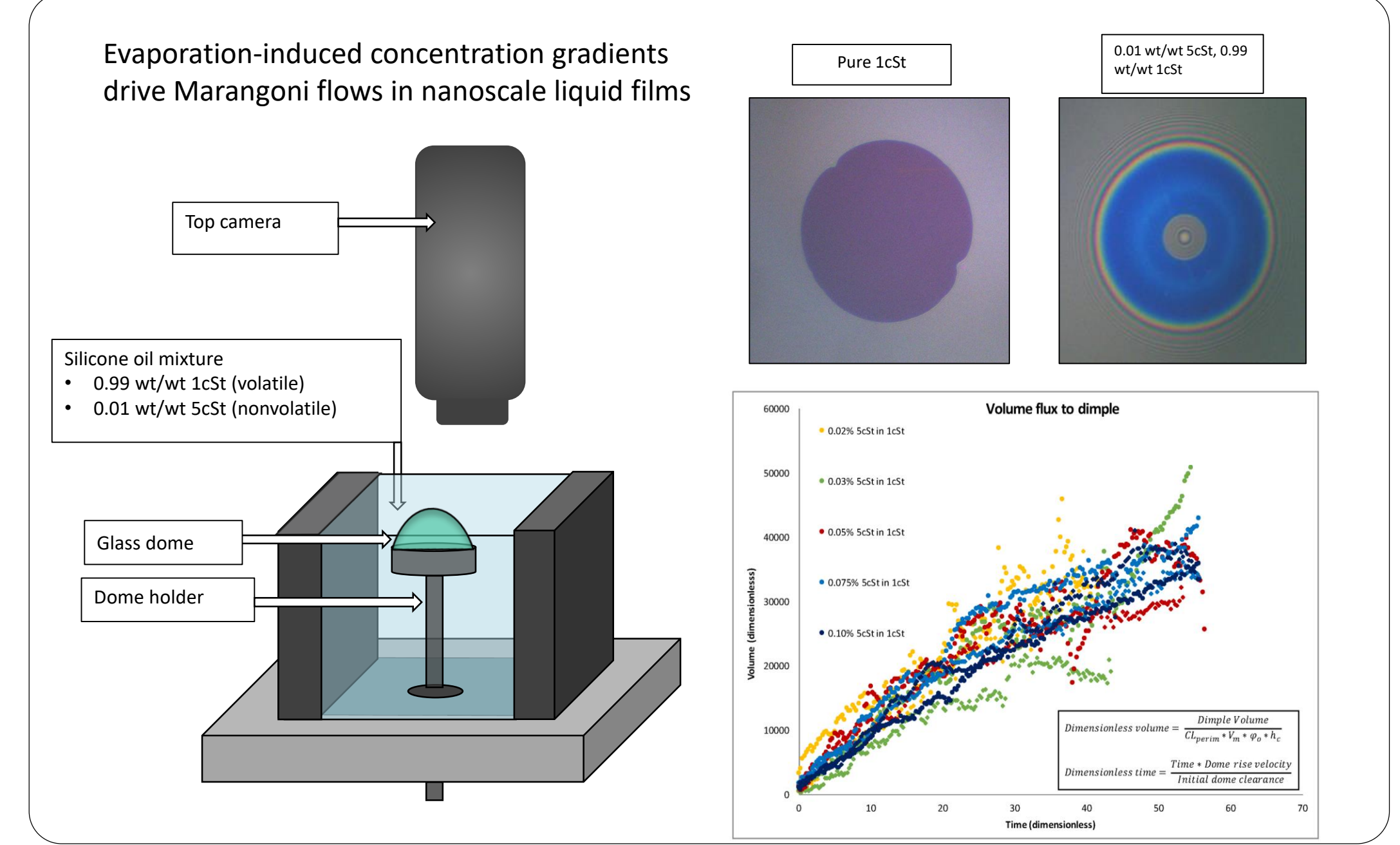
Interfacial stability of protein-surfactant solutions  
Aadithya Kannan



Droplet Coalescence and Spontaneous Emulsification in the Presence of Asphaltenes - Simone Bochner



Solutocapillary flows in thin films  
Mariana Rodriguez-Hakim



Mitigating foaming in lubricants  
Vinny Suja

